

# Product Handbook for Metric Standard Steel Lockers

## Section D - Standard Locker Configurations

### Three-Tier Locker

Overall Dimensions in mm			Nesting Availability		
Height	Width	Depth	Initial	Nest 2	Nest 3
1800	225*	450	●	●	●
1800	225*	500	●	●	●
1800	300	300	●	●	●
1800	300	450	●	●	●
1800	300	500	●	●	●
1800	300	550	●	●	●
1800	300	600	●	●	-
1800	400	450	●	●	-
1800	400	500	●	●	-
1800	400	550	●	●	-
1800	400	600	●	●	-
1800	450	450	●	●	-
1800	450	500	●	●	-
1800	450	550	●	●	-
1800	450	600	●	●	-

\* Slimline Lockers, also available in nests of 4

§ Shaded items available on special reduced lead-time delivery (in standard colours). Check current price lists for availability.

#### Product identification (front vent style):



Metric Series

#### Internal fittings:

- two fixed intermediate shelves

#### Standard lock fitting:

key operated deadlocks providing single-point locking. Supplied with two keys.

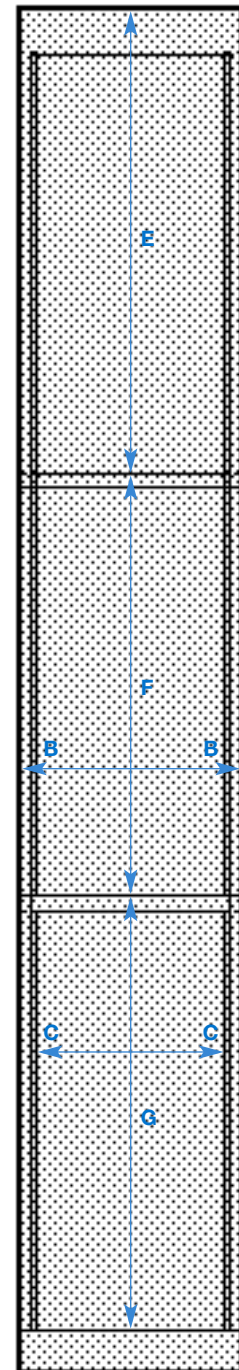
#### Door/compartment identification:

none supplied as standard.

Number plates are available separately - refer to page F1 for details.

#### Example weights in kg:

	Nest 1	Nest 2	Nest 3
300 x 450	18.2	33.2	48.2
400 x 450	21.5	39.7	-



<b>A</b> = overall width	<b>D</b> = overall depth (internal depth is overall depth -21mm)
<b>BB</b> = internal width (overall width -3mm)	<b>E</b> = top compartment height: 608mm
<b>CC</b> = clear opening 225mm (overall width) = 175mm clear 300mm (overall width) = 250mm clear 400mm (overall width) = 350mm clear 450mm (overall width) = 400mm clear	<b>F</b> = intermediate compartment height: 557mm

Web: [www.3dlockers.co.uk](http://www.3dlockers.co.uk)

Tel: 01924 240291

Email: [sales@3dlockers.co.uk](mailto:sales@3dlockers.co.uk)

**3Dlockers**